



SCHOOL INFORMATION PROFILE

ST. ANTOINE DANIEL

October 5, 2016

All the information contained within the School Information Profile (SIP) relates to the requirements as outlined within the Ministry of Education's Revised Pupil Accommodation Guideline issued March 26, 2015.

TABLE OF CONTENTS

SECTION	ITEM	PAGE
PART 1 – FACILITY PROFILE		
1.1	GENERAL INFORMATION	2
1.2	SITE PLAN	3
1.3	AERIAL PHOTO	5
1.4	ROOM SUMMARY FROM SCHOOL FACILITY INFORMATION SYSTEM (SFIS)	6
1.5	SPACE TEMPLATE FOR ELEMENTARY OR SECONDARY PROPOSED SCHOOL (N/A)	7
1.6	FLOOR PLAN	7
1.7	BOUNDARY MAPS	8
1.8	OFFICIAL PLAN	10
1.9	ZONING BY-LAW	11
PART 2 – FACILITY CONDITION PROFILE		
2.1	FACILITY CONDITION INDEX	12
2.2	10 YEAR RENEWAL HISTORY	12
2.3	5 YEAR RENEWAL REQUIREMENTS	13
2.4	SCHOOL UTILITY COSTS	13
2.5	SCHOOL ACCESSIBILITY MEASURES	14
PART 3 - STUDENT DATA PROFILE		
3.1	ENROLMENT HISTORY (5 YEARS)	15
3.2	ENROLMENT PROJECTIONS (15 YEARS)	15
3.3	STUDENT PROXIMITY	16
3.4	PUPIL DISTRIBUTION	17
3.5	OUT OF AREA STUDENTS	18
3.6	STUDENT TRANSPORTATION	18
PART 4 – INSTRUCTIONAL DATA PROFILE		
4.1	STAFF ALLOCATION TO SCHOOL	19
4.2	SPECIALIZED COURSES AND PROGRAMS	19
4.3	CURRENT GRADE ORGANIZATION ELEMENTARY SCHOOL	20
4.4	CURRENT GRADE ORGANIZATION SECONDARY SCHOOL (N/A)	21
4.5	EXTRA-CURRICULAR ACTIVITIES	21
PART 5 – OTHER SCHOOL USE PROFILE		
5.1	NON SCHOOL PROGRAMS AND SERVICES	22
5.2	COMMUNITY PARTNERSHIPS (N/A)	22
5.3	COMMUNITY USE OF SCHOOL (N/A)	22
5.4	CHILD CARE (N/A)	23
5.5	CONTINUING EDUCATION (N/A)	23
5.6	MUNICIPAL PROPERTY ASSESSMENT CORPORATION / RATEPAYERS ANALYSIS	24
PART 6 – PARISH INFORMATION PROFILE		
6.1	PARISH CONNECTIONS	25
6.2	FAITH FORMATION	25



SCHOOL INFORMATION PROFILE

ST. ANTOINE DANIEL

October 5, 2016

PART 1 – FACILITY PROFILE**1.1 GENERAL INFORMATION**

The following table provides general information from the School Information profile for the particular school. Data contained in this table will be replaced with the actual data for each school.

School Name	St. Antoine Daniel
Address	460 Park Street, Victoria Harbour
Panel	Elementary
Grades Served	JK-8
Ministry On-The-Ground Capacity (OTG)	291
Current Enrolment as of September 2016	271
Current Utilization Rate	93%
Building Area (m2)	2,637 m2
Site Area (ha)	9.50 ha
Original Construction Date	1998
Date(s) of School Addition(s) / Renovations	n/a
Hard Surface Play Area (m2.)	
Number of parking spaces	37
Number of Portable Classrooms	0
Number / Type of Instructional Rooms	14
Child Care on Site	No
Name of Child Care Provider	n/a
Type of Child Care	n/a
Child Care Capacity	n/a
Child Care Enrolment and Ages Served	n/a



SCHOOL INFORMATION PROFILE

ST. ANTOINE DANIEL

October 5, 2016

Assessment of Parking, Pick-Up and Drop-Off Areas

Provide a written assessment of Parking, Pick-up and Drop-off Areas as outlined on the site plan above.

Notes (if applicable)

There are some concerns with parking, pick-up & drop-off areas which are primarily related to the volume of bus and car traffic that occurs in the morning and afternoon peak times.

As well, since the school only has 1 driveway entrance, it adds to the on-site congestion.



SCHOOL INFORMATION PROFILE

ST. ANTOINE DANIEL

October 5, 2016

1.3 AERIAL PHOTO

The following provides an aerial photo showing the school site, the property outline of the school and adjacent land uses.

ST. ANTOINE DANIEL CATHOLIC ELEMENTARY SCHOOL AERIAL MAP



<p>Legend</p>  Extent of School Property	  	<p>St. Antoine Daniel Catholic Elementary School, Victoria Harbour AERIAL MAP</p> 
--	---	---



SCHOOL INFORMATION PROFILE

ST. ANTOINE DANIEL

October 5, 2016

1.4 ROOM SUMMARY FROM SCHOOL FACILITY INVENTORY SYSTEM (SFIS)

The SFIS is the Ministry of Education's School Facility Information System which provides facility details for each school in our jurisdiction. The following information identifies the details related to the space type the school was designed for, the current use of the school classrooms, the On the Ground Capacity (OTG) of the school based on the Space Type and the Functional Capacity (FC) based on the Current Use of the classrooms.

SFIS ID: 8330 Facility Name: St Antoine Daniel**Inventory Data**

Room Number	Space Type	Current Use	Loading (OTG)	Loading FC	Comments Current 2016/17 Classroom
123	Classroom	Classroom	23	23	Grade 5
124	Classroom	Other	23	0	French Prep
125	Classroom	Classroom	23	23	Grade 8
126	Classroom	Classroom	23	23	Grade 7/8
127	Classroom	Classroom	23	23	Grade 5/6
128	Classroom	Classroom	23	23	Grade 4
133	Classroom	Classroom	23	23	Grade 1
134	Classroom	Classroom	23	23	Grade 1/2
135	Classroom	Classroom	23	23	Grade 2
136	Classroom	Classroom	23	23	Grade 3/4
115	General Purpose Room	General Purpose Room	0	0	
139	Kindergarten	Senior Kindergarten	26	26	JK/SK
137	Kindergarten	Junior Kindergarten	26	26	JK/SK
147	Library Resource Centre	Library Resource	0	0	MET
118	Other	Lunch	0	0	MET on stage
130	Seminar Room	Resource-General	0	12	Resource
129	Special Ed.	Special Education	9	9	MET - SE & RE/CP
108	Staff Work Rm./Lounge	Staff Work/Lounge	0	0	
TOTAL LOADING CAPACITY (OTG)			291		
TOTAL LOADING FUNCTIONAL CAPACITY (FC)				280	

NOTE:

Loading = Ministry of Education On the Ground Capacity of the school based on the 'Space Type' the school was designed for.

Loading FC = Functional Capacity of the school based on the 'Current Use' of each school classroom.



SCHOOL INFORMATION PROFILE

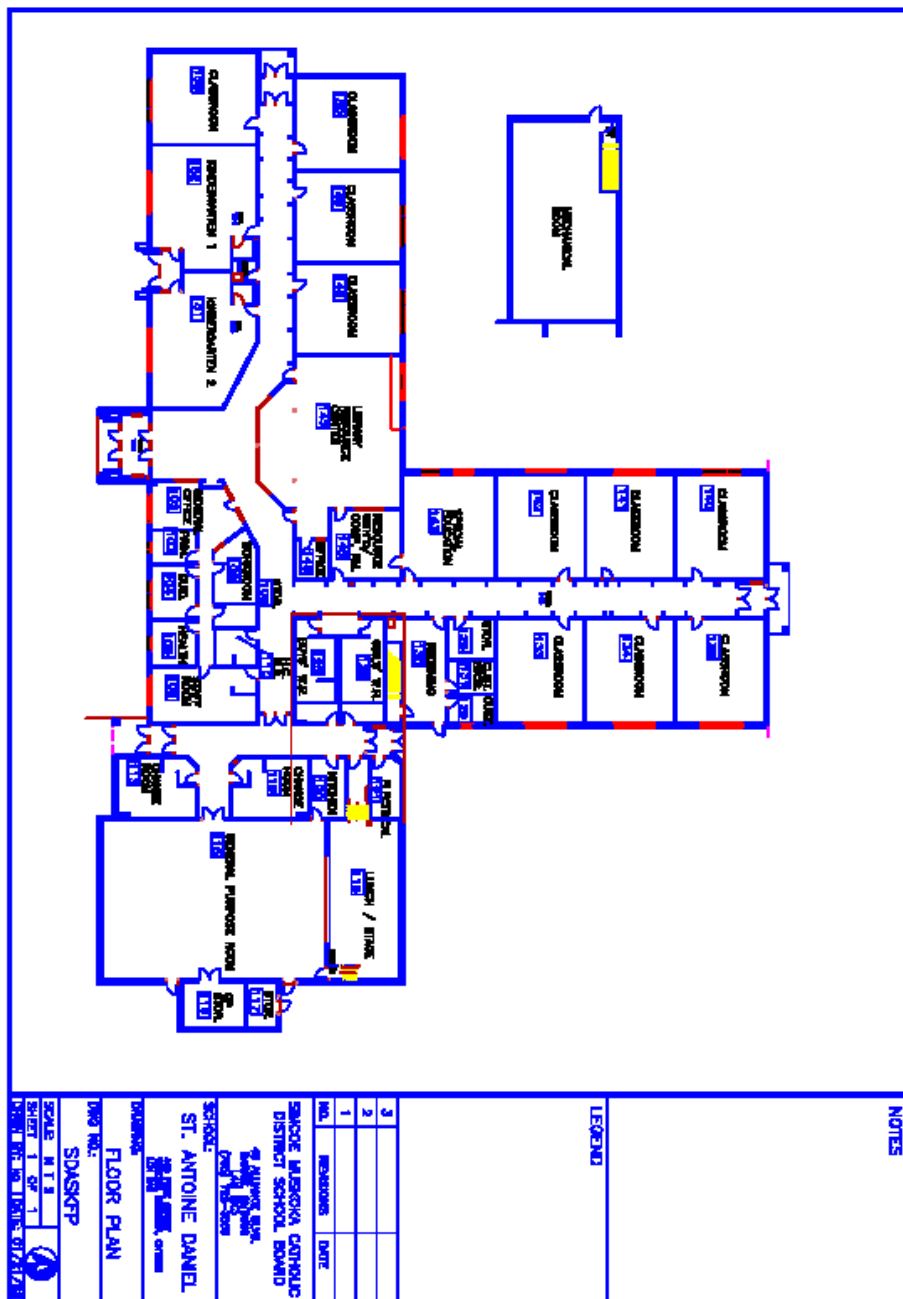
ST. ANTOINE DANIEL

October 5, 2016

1.5 SPACE TEMPLATE FOR ELEMENTARY OR SECONDARY PROPOSED SCHOOL N/A

1.6 FLOOR PLAN

The following provides a school floor plan outlining the locations of the classroom and other teaching and non-teaching spaces within the school.





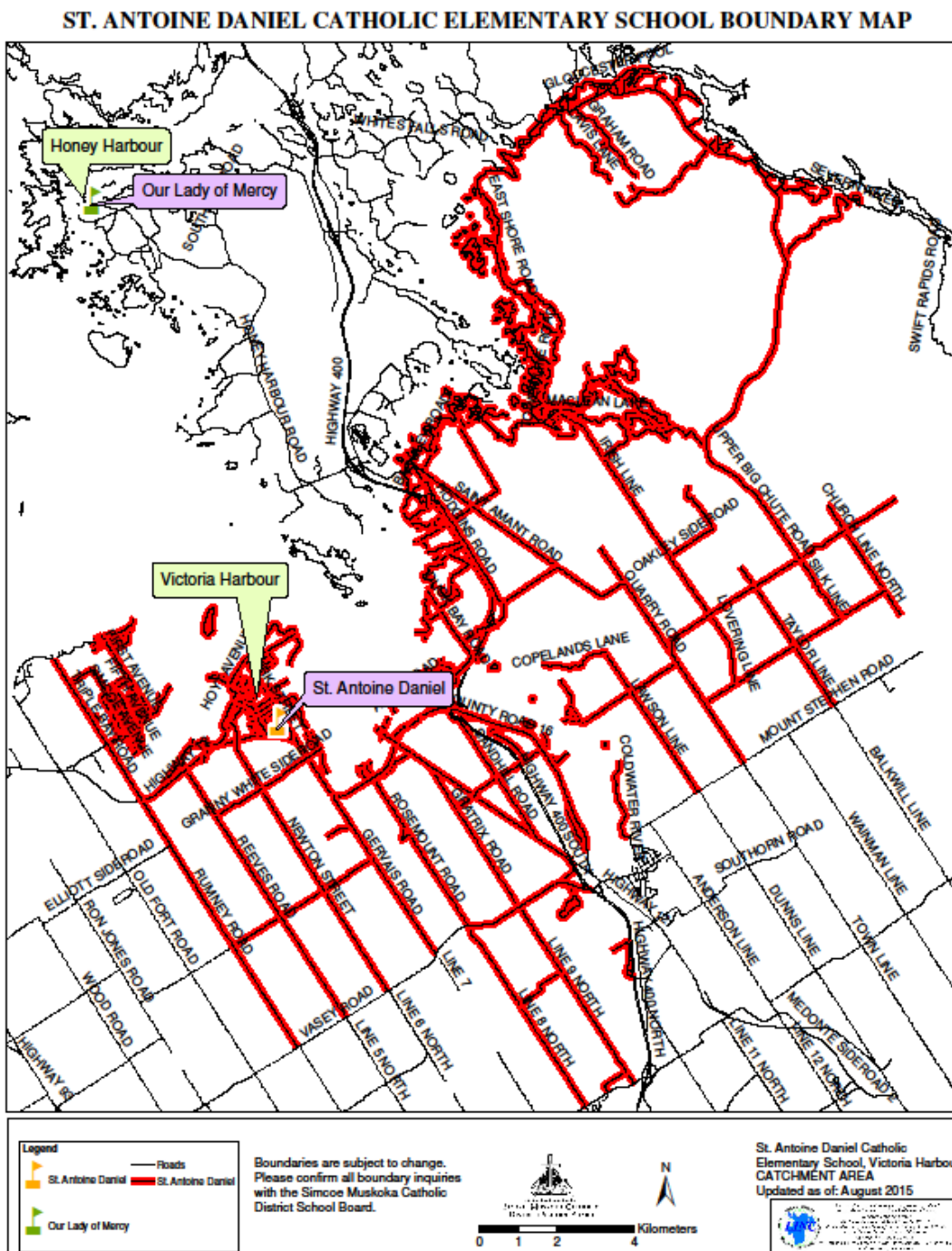
SCHOOL INFORMATION PROFILE

ST. ANTOINE DANIEL

October 5, 2016

1.7 BOUNDARY MAPS

The following provides a map showing the elementary school location and the elementary school boundary.



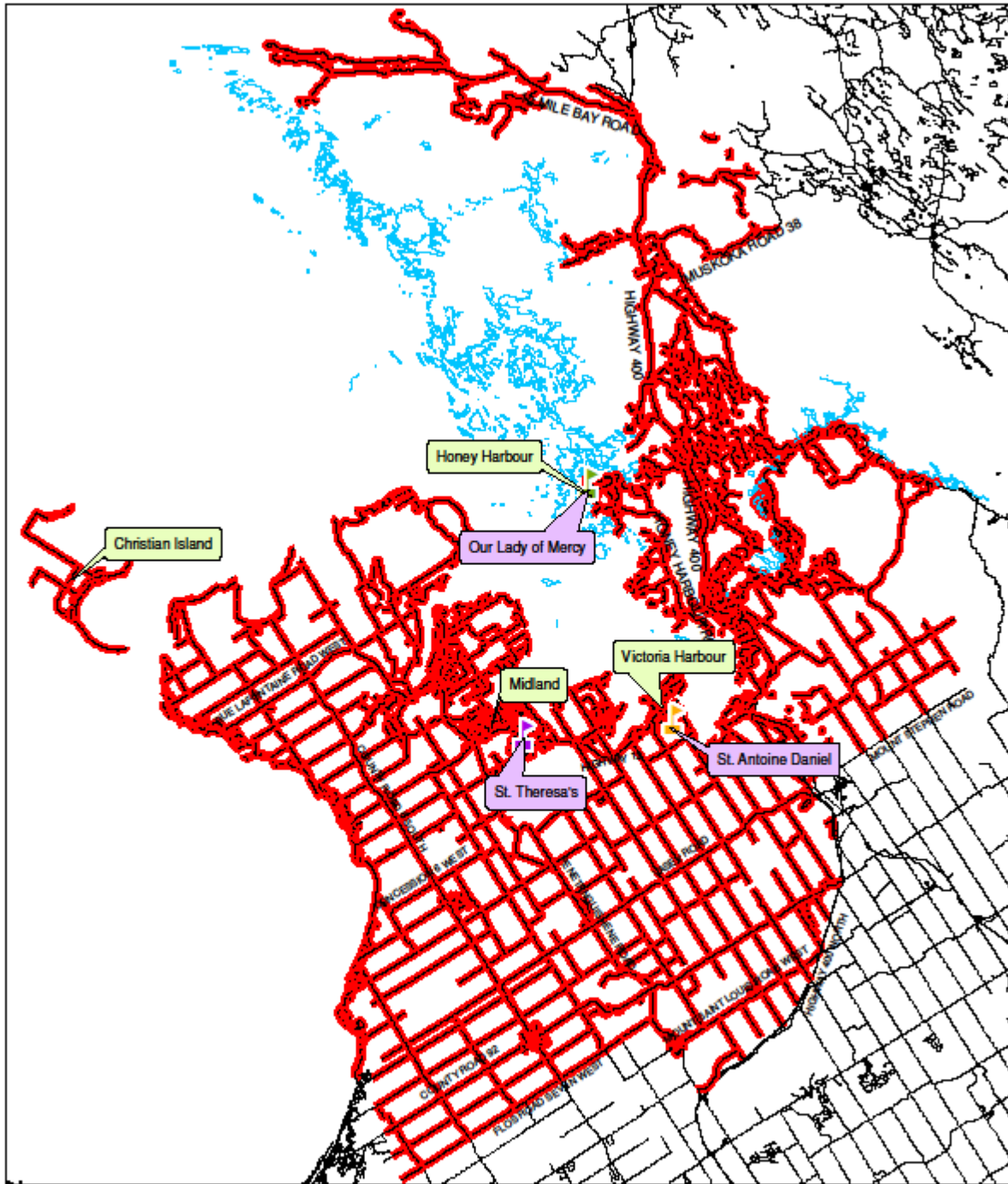


SCHOOL INFORMATION PROFILE





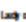

ST. ANTOINE DANIEL

October 5, 2016

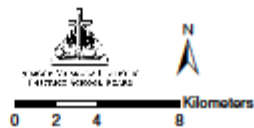
ST. THERESA'S CATHOLIC SECONDARY SCHOOL BOUNDARY MAP



Legend


-  Our Lady of Mercy
-  St. Theresa's
-  St. Antoine Daniel
-  St. Theresa's
-  Roads
-  Water

Boundaries are subject to change.
Please confirm all boundary inquiries
with the Simcoe Muskoka Catholic
District School Board.



0 2 4 8 Kilometers

St. Theresa's Catholic
Secondary School, Midland
CATCHMENT AREA
Updated as of: August 2015





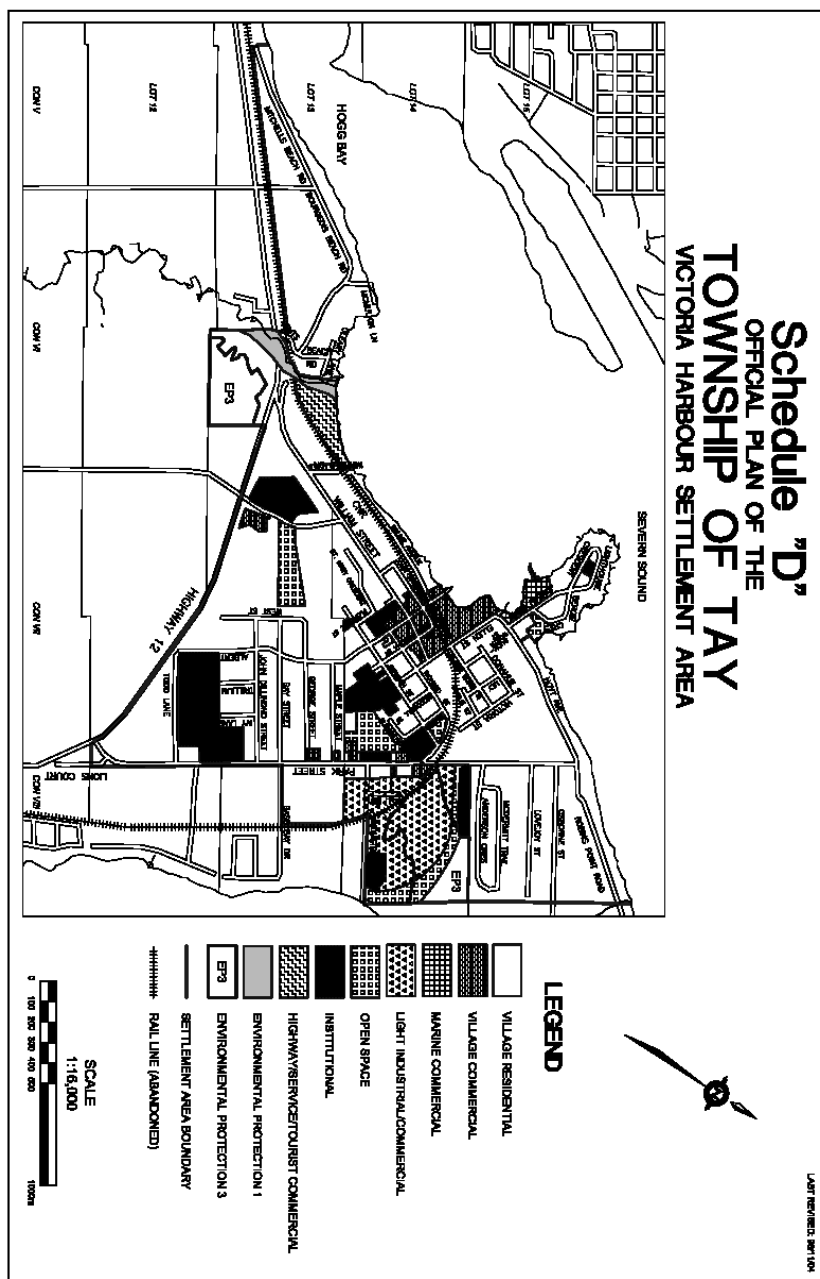
SCHOOL INFORMATION PROFILE

ST. ANTOINE DANIEL

October 5, 2016

1.8 OFFICIAL PLAN

The following provides a map showing the school site, the current official plan or secondary plan designation from the municipality for the school site and adjacent lands. The official plan description is added below the map or on an adjacent page.



School site has an Institutional designation with Village Residential, Rural, and Environmental Protection designations adjacent the site.



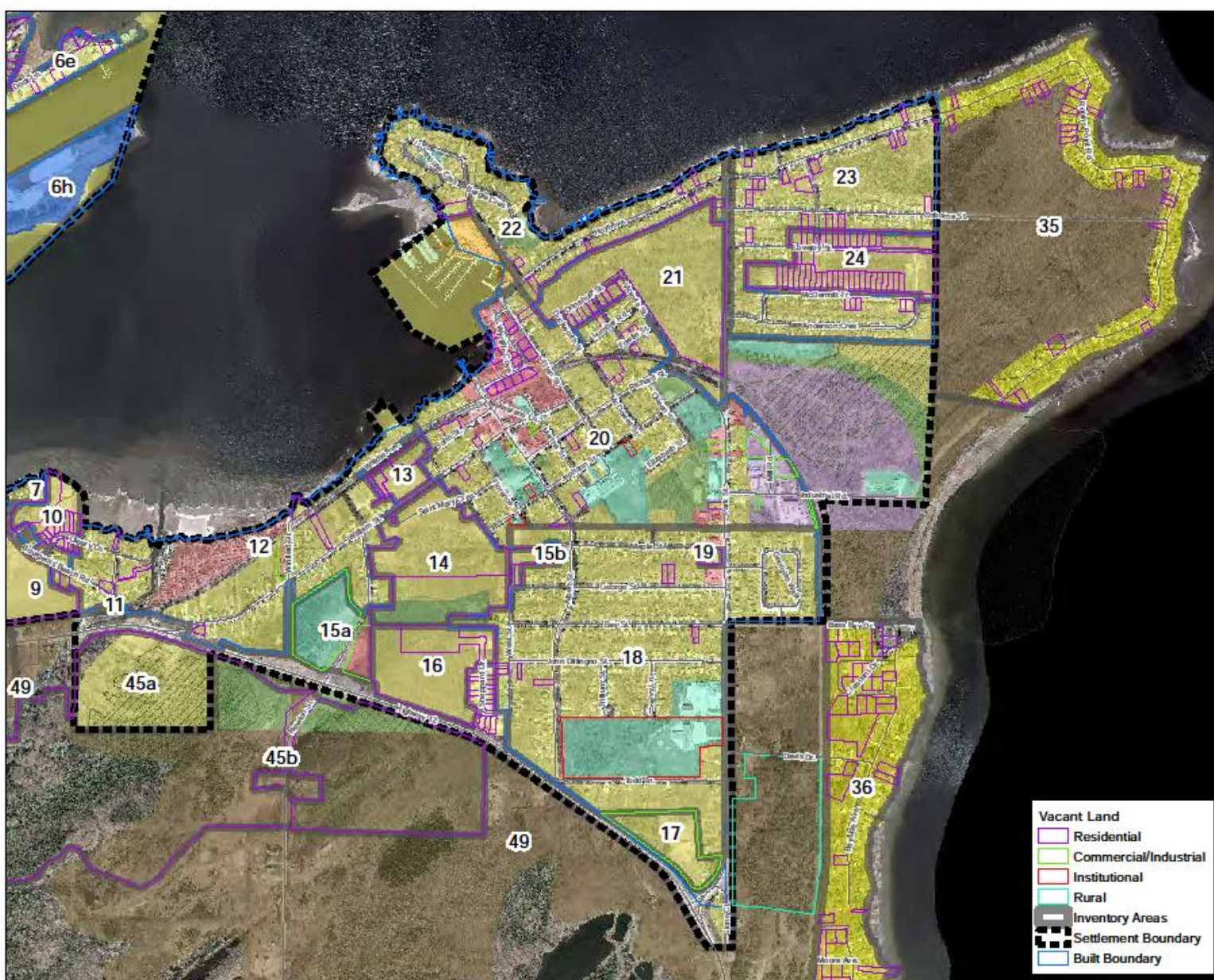
SCHOOL INFORMATION PROFILE

ST. ANTOINE DANIEL

October 5, 2016

1.9 ZONING BY-LAW – VICTORIA HARBOUR MAP

The following provides a map showing the school site, the current zoning from the municipality for the school site and adjacent lands, and any dual or underlying zoning on the property. The zone description is added below the map or on an adjacent page.



School site is zoned Institutional with Institutional, Residential and Rural zoning adjacent.



SCHOOL INFORMATION PROFILE

ST. ANTOINE DANIEL

October 5, 2016

PART 2 – FACILITY CONDITION PROFILE**2.1 FACILITY CONDITION INDEX**

The facility Condition Index (FCI) is the building condition as determined by the Ministry of Education by calculating the five-year renewal needs and the replacement value for each facility.

School Name	St. Antoine Daniel
Replacement Value (A)	\$ 6,622,510
5 Year Renewal Needs (B)	\$ 209,103
Facility Condition Index	3.2% (B) / (A)

2.2 10 YEAR RENEWAL HISTORY

The 10 year renewal history lists those major repairs at the school which are captured by the TCPS/VFA facilities database. The summary includes the year undertaken, the specific renewal item (e.g. Roof Replacement), the value of that repair and a cumulative value of all repairs undertaken within the 10 year time frame. The table excludes routine maintenance and other items not considered as renewal under the Tangible Capital Assets guide.

YEAR	RENEWAL ITEM	COST	CUMULATIVE COST
2015/2016		-	-
2014/2015		-	-
2013/2014		-	-
2012/2013		-	-
2011/2012		-	-
2010/2011		-	-
2009/2010		-	-
2008/2009		-	-
2007/2008		-	-
2006/2007		-	-
2005/2006		-	-
	TOTAL	-	-

Note: TCPS/VFA = Tangible Capital Property Summary and is a database used by the Ministry of Education and School Boards to track financial information on schools facilities condition.



SCHOOL INFORMATION PROFILE

ST. ANTOINE DANIEL

October 5, 2016

2.3 5 YEAR RENEWAL REQUIREMENTS

The 5 year renewal requirements lists those major repairs which are captured by the TCPS/VFA facilities database and listed with by priority. The summary includes the year to be undertaken, the specific renewal item (e.g., Roof Replacement), the value of that repair and a cumulative value of all proposed renewal projects.

YEAR	RENEWAL ITEM	COST	CUMULATIVE COST
2016/2017	Floor Finishes	49,132	49,132
2016/2017	Lighting Equipment	\$ 18,000	\$ 67,132
2016/2017	Wall Finishes	\$141,971	\$ 209,103
	TOTAL	\$209,103	

Note: TCPS/VFA = Tangible Capital Property Summary and is a database used by the Ministry of Education and School Boards to track financial information on schools facilities condition.

2.4 SCHOOL UTILITY COSTS

The utility cost data will be reported for the last complete year available and includes the costs for Natural Gas, Water, and Electricity as billed by the local utility. The total cost represents the cost for the year including the costs for portable or other licensed or leased facilities within the school (i.e., child care centre).

UTILITY COSTS FOR THE YEAR	
Natural Gas	3,600
Water	8,000
Hydro	36,000
TOTAL	47,600
Building Area – Permanent (A)	2,637 m ²
Building Area – Non Permanent (B)	0
TOTAL BUILDING AREA (A + B)	2,637 m²
Cost per square foot	\$18.05

Notes on Utility Costs (if applicable)

--



SCHOOL INFORMATION PROFILE

ST. ANTOINE DANIEL

October 5, 2016

2.5 SCHOOL ACCESSIBILITY MEASURES

The school accessibility measures represent the current Accessibility Inventory for the school as calculated by the Plant Department.

School Name	St. Antoine Daniel
Number of Storeys	1
Accessible Entrance	Yes
Door Operator	1
Front	Yes
Other	
Lift Devices	Yes from gym floor to stage
Elevator	n/a
Stage Lift	Yes, however, currently inoperable
Other Lift	
Barrier Free Washroom	Yes – special needs washroom and BF staff
Accessibility to Instructional Areas	Yes – all one level

Notes on Accessibility (if applicable)



SCHOOL INFORMATION PROFILE

ST. ANTOINE DANIEL

October 5, 2016

PART 3 – STUDENT DATA PROFILE**3.1 ENROLMENT HISTORY (5 YEARS)**

The historical enrolment is provided on a grade by grade basis for the last 5 years including the current year as of October 31st of the year. Any changes to the grade configuration or programming will be noted below the table along with an explanation.

SCHOOL YEAR	JK	SK	1	2	3	4	5	6	7	8	9	10	11	12	TOTAL	UTILIZATION
2011/2012	24	31	26	28	30	27	28	25	30	30					279	96%
2012/2013	18	18	29	20	27	28	23	25	22	27					237	81%
2013/2014	26	20	21	29	19	25	29	20	28	21					238	82%
2014/2015	28	25	20	23	28	20	22	28	18	28					240	82%
2015/2016	20	32	28	19	31	30	24	25	30	22					261	89%
2016/2017	36	19	34	27	18	30	31	21	24	31					271	93%

3.2 ENROLMENT PROJECTION (15 YEARS)

The projected enrolment is provided on a grade by grade basis for the next 15 years (excluding the current year) for the school. This projected enrolment assumes that approved changes in the grade or program structure can continue.

SCHOOL YEAR	JK	SK	1	2	3	4	5	6	7	8	9	10	11	12	TOTAL	UTILIZATION
2017/2018	28	36	19	34	27	18	30	31	21	24					268	92%
2018/2019	30	29	34	17	31	26	18	27	30	22					264	91%
2019/2020	30	29	29	33	17	31	25	18	27	30					269	92%
2020/2021	30	29	29	28	33	17	30	24	18	27					265	91%
2021/2022	30	29	29	28	28	33	16	29	24	17					263	90%
2022/2023	31	29	29	29	28	28	31	16	29	24					274	94%
2023/2024	31	29	29	29	29	28	27	31	16	29					278	96%
2024/2025	31	30	30	29	29	28	27	27	31	16					278	96%
2025/2026	32	30	30	29	29	29	27	27	27	30					290	100%
2026/2027	32	30	30	30	29	29	28	27	27	26					288	99%
2027/2028	33	31	31	30	30	29	28	27	27	26					292	100%
2028/2029	34	32	31	30	30	29	28	27	27	26					294	101%
2029/2030	34	32	32	31	30	30	28	28	27	27					299	103%
2030/2031	35	33	32	31	31	30	29	28	28	27					304	104%
2031/2032	35	33	32	31	31	30	29	28	28	27					304	104%

Note: The Long Term Projections were developed by Watson & Associates and were updated in July 2016. The projections are based on historical assumptions for JK students and average retention rates.



SCHOOL INFORMATION PROFILE

ST. ANTOINE DANIEL

October 5, 2016

3.3 STUDENT PROXIMITY

Student proximity measures the distance from the student's home address to the school using straight line distances. The data is aggregated by grade division and expressed as both a total number of students and as a percentage of the current year enrolment based on September 2016 enrolment.

DIVISION	< 800 metres	800-1600 metres	1600-3200 metres	> 3200 metres
Primary JK-3	19	13	27	75
Junior 4-6	9	11	12	50
Intermediate 7-8	5	9	8	33
Secondary 9-12	n/a	n/a	n/a	n/a
TOTAL STUDENTS	33	33	47	158
% of TOTAL	12%	12%	17%	58%

Average Distance to School: 6.65 km**Total Students: 271**



SCHOOL INFORMATION PROFILE

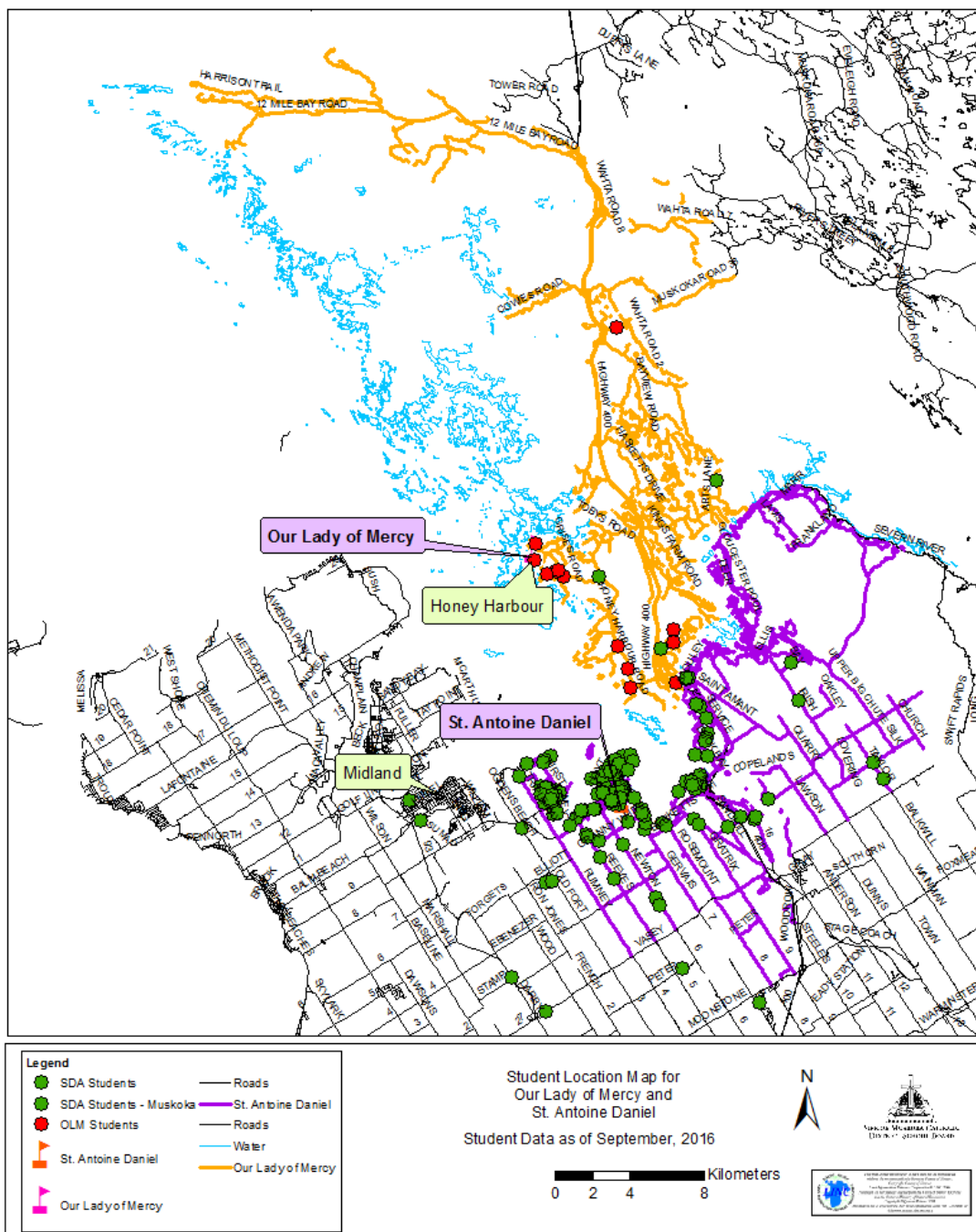
ST. ANTOINE DANIEL

October 5, 2016

3.4 PUPIL DISTRIBUTION

The following provides a map showing the family home locations for each of the students attending the school under review. Each dot on the map identifies a family and not an individual student.

STUDENT DISTRIBUTION MAP FOR OUR LADY OF MERCY AND ST. ANTOINE DANIEL





SCHOOL INFORMATION PROFILE

ST. ANTOINE DANIEL

October 5, 2016

3.5 OUT OF AREA STUDENTS

Out of Area students are calculated using home address of the student as compared to the current school boundary.

DIVISION	In Area Students	Out of Area Students	% of Out of Area
Primary JK-3	123	11	9%
Junior 4-6	78	4	5%
Intermediate 7-8	52	3	6%
Secondary 9-12	n/a	n/a	n/a
TOTAL STUDENTS	253	18	7%

3.6 STUDENT TRANSPORTATION

Student transportation data is calculated for the current year as of September 7th. The students entitled to transportation are those identified by SCSTC by virtue of distance to school, by identified impediments to safe access to school (i.e. road conditions) or by identification from student services.

DIVISION	Entitled to Transportation	Not Entitled to Transportation	% Not Entitled to Transportation
Primary JK-3	87	42	32.56 %
Junior 4-6	56	22	28.20 %
Intermediate 7-8	42	13	23.60 %
Secondary 9-12	N/A	N/A	N/A
TOTAL STUDENTS	185	77	29.39 %

FOR TRANSPORTED STUDENTS	
Shortest Bus Ride (in minutes)	3
Longest Bus Ride (in minutes)	60
Average Bus Ride (in minutes)	25.41

Notes on Transportation (if applicable)

4 Full Size Vehicles

3 Minivans



SCHOOL INFORMATION PROFILE

ST. ANTOINE DANIEL

October 5, 2016

PART 4 - INSTRUCTIONAL DATA PROFILE**4.1 STAFF ALLOCATION TO SCHOOL**

The staff allocation to school includes the current year teaching and non-teaching staff allocation to the school. The staff values are expressed to two decimal places.

TEACHING STAFF ALLOCATION	NUMBER
Classroom Teachers	11.0
Program Support (SERT & RR)	1.37
Prep Time (JK-8)	0.87
FSL (1-8)	0.87
Extra Prep Time	0.35
Library	0.35
Principal	1.0
Vice Principal	n/a
DECE	2.0
TOTAL	17.81

NON-TEACHING STAFF ALLOCATION	NUMBER
Secretary	1.0
EA's	5.5
Custodians	1.43
Other	
TOTAL	7.93

TOTAL STAFF	25.74
--------------------	--------------

4.2 SPECIALIZED COURSES AND PROGRAMS

Please indicate if the school has any of the following programs and the grades served by these programs. If the program is not listed here, please insert a line and add the program.

PROGRAMS	YES / NO	GRADES
Early Intervention Program		
Transition Program	YES	8
Section 23	NO	
Advanced Placement	NO	
SHSM (Secondary only)	n/a	
OYAP (Secondary only)	n/a	
Co-op Placements (Secondary)	n/a	
Other		



SCHOOL INFORMATION PROFILE

ST. ANTOINE DANIEL

October 5, 2016

4.4 COURSE AND PROGRAM OFFERINGS SECONDARY SCHOOLS ONLY – N/A

4.5 EXTRA-CURRICULAR ACTIVITIES

Provide a list of all extra-curricular activities including athletic teams, clubs, performing arts, community outreach and other school sponsored events that have been run within the last year. For each activity, indicate the number of participants or teams.

EXTRA-CURRICULAR ACTIVITY	# of PARTICIPANTS
See note below	

There are several extra-curricular activities occurring at the school.

- Girls Junior level Basketball, Volleyball, Cross Country, Track & field and Soccer
- Girls Intermediate level Basketball, Volleyball, Cross Country, Track & field and Soccer
- Boys Junior level Basketball, Volleyball, Cross Country, Track & field and Soccer
- Boys Intermediate level Basketball, Volleyball, Cross Country, Track & field and Soccer

There are a number of clubs / activities including:

- Choir Gr. 4 - 8
- Chess Gr. 5 - 8
- Public Speaking Gr. 4 - 8
- Eco Schools, Gr. 4 - 8
- Me to We Ambassadors Gr. 4 - 8
- PALS Gr. 6 - 8
- Girls Yoga Gr. 6
- Camera Gr. 8
- Reading Buddies Gr. 6 - 8
- KOC Free Throw contest Gr. 4 - 8



ST. ANTOINE DANIEL

October 5, 2016

PART 5 - OTHER SCHOOL USE PROFILE

5.1 NON SCHOOL PROGRAMS AND SERVICES

This section describes the current non-school programs or services located at the school as well as any revenue from these non-school programs or services.

PROGRAM OR USER GROUP	ROOM(S) USED	REVENUE FROM CURRENT YEAR	COST RECOVERY

5.2 COMMUNITY PARTNERSHIPS

This section describes the current community partnerships located at the school as defined by the Community Planning and Partnership Guideline and Board Policy as well as the revenue received from these partners.

COMMUNITY PARTNER	ROOM(S) USED	REVENUE FROM CURRENT YEAR	COST RECOVERY
Township of Tay	Outside space only	Agreement for use of play yard	YES

5.3 COMMUNITY USE OF SCHOOL N/A

Provide the details for the Community Use of Schools for the current year including all permits up to the end of June that are in the current system. Indicate the category from the Community Use of Schools procedure, the number of hours used annually by the group and the days of the week that the permit user operates on.

COMMUNITY USE GROUP	CATEGORY	HOURS USED ANNUALLY	DAYS USED

Notes (if applicable)



SCHOOL INFORMATION PROFILE

ST. ANTOINE DANIEL

October 5, 2016

5.4 CHILD CARE N/A

Please provide details regarding the Child Care programs at the school which are licensed under the Child Care & Early Years Act. This information will include the Child Care Operator, the licensed program capacity, the current number of children enrolled and the size of the facility within the school.

CHILD CARE OPERATOR		
PROGRAM	Licensed Capacity	Current Enrolment
Infant		
Toddler		
Pre-School		
Nursery School		
School Aged B & A		
SQUARE FOOTAGE OF SPACE		

Please indicate the square footage of the dedicated space child care and the shared space child care areas as indicated on the child care license for the current year.

Licensed Spaces at School	
Dedicated Space Area	
Shared Space Area	
Number of Rooms	
Annual Revenue Received from Child Care	

All Child Care Centres are run on a cost recovery basis and are operated as not-for-profit entities.

5.5 CONTINUING EDUCATION N/A

Please list all continuing Education programs at the school that operate the school and the number of students served by the programs.

CONTINUING EDUCATION PROGRAMS	YES/NO	STUDENTS
International Language	NO	
Summer School	NO	
General Interest Courses	NO	
Night School	NO	
Other Programs		

Notes (if applicable)

--



SCHOOL INFORMATION PROFILE

ST. ANTOINE DANIEL

October 5, 2016

5.6 MUNICIPAL PROPERTY ASSESSMENT CORPORATION (MPAC) / RATEPAYERS ANALYSIS

Summary of Pre-School and School aged catholic children as identified through the Municipal Property Assessment Corporation (MPAC) database as of September 29, 2016. Please note that St. Antoine Daniel's school boundary includes portions of Severn and Oro-Medonte Townships.

Township of Tay, County of Simcoe

AGE (Year)	TOTAL	TOTAL CATHOLIC MALES	TOTAL CATHOLIC FEMALES	TOTAL CATHOLIC
0 to 3	17	3	1	4
4 to 13	271	57	41	98
14 to 18	229	31	30	61
TOTAL	517	91	72	163



SCHOOL INFORMATION PROFILE

ST. ANTOINE DANIEL

October 5, 2016

6.1 PARISH CONNECTIONS

Identify the local Parishes serving the school community.

Parish	St. Mary's Parish
Location	266 Albert St, Victoria Harbour
Distance from school to parish	2 km

6.2 FAITH FORMATION

Provide information regarding the breadth of the faith formation programs available at the school and all programs run in conjunction with the parish on an annual basis in the current year.

FAITH FORMATION PROGRAMS	
Religion and Family Life Programs)
Sacramental Preparation)
Catholic Social Teachings) See note below
Liturgical Celebrations)
Involvement with Parish)
Catholic Graduate Expectations, Curriculum Maps and Virtues)

Programs run in conjunction with Parish	Occurrence
See note below	

Notes (if applicable)

There is a strong connection with the local parish and they are fortunate to have routine (bi-weekly or more often) visits from the parish priest in support of Faith Formation programs.

Typically the school and parish work jointly on sacramental preparations. The parish includes the St. Mary's, Victoria Harbour and St. John's Waubaushene and they therefore alternate the location where sacraments are celebrated each year. Masses are held at the school several times through the year including Thanksgiving, Christmas and Easter.